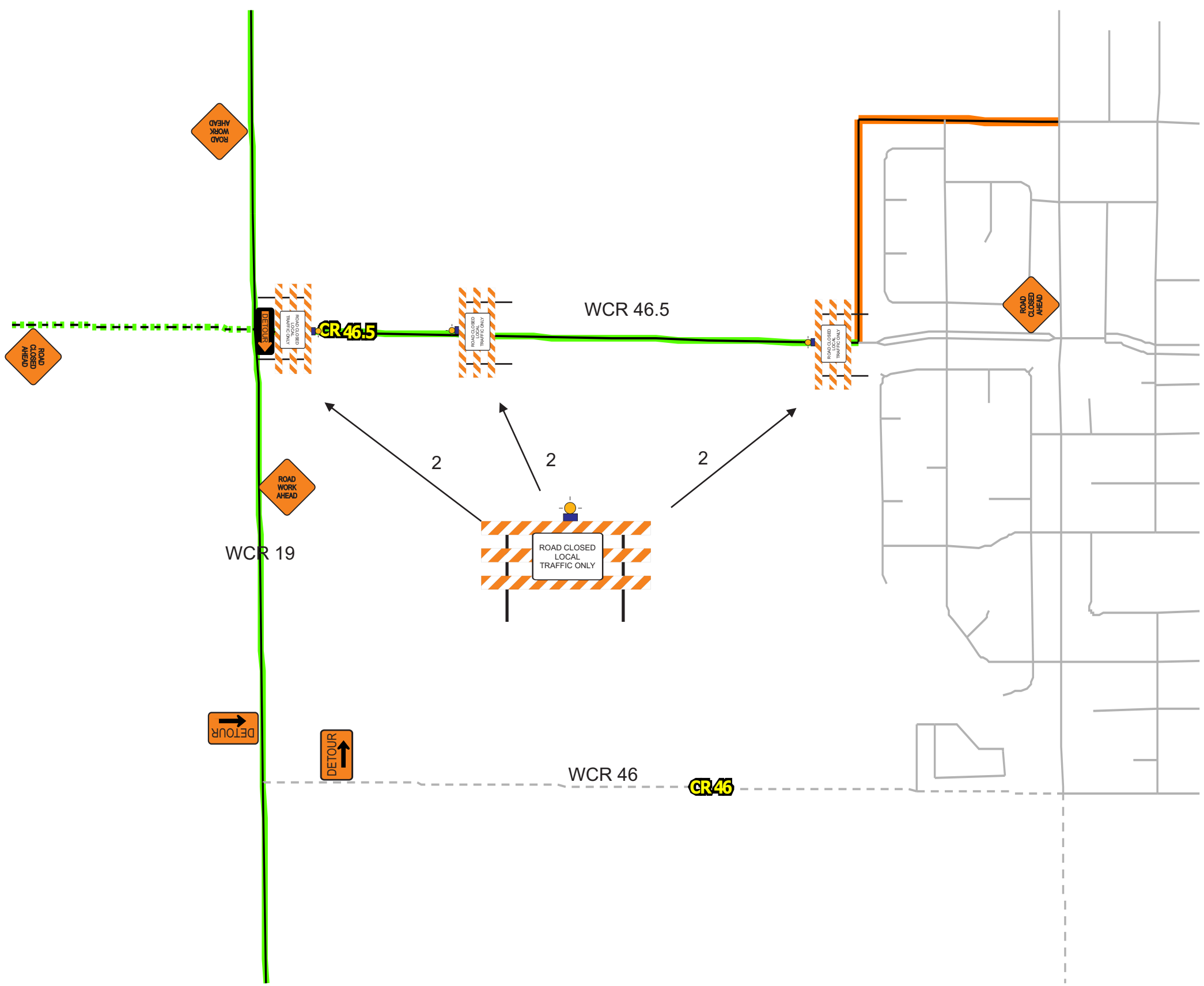


EMERGENCY CLOSURE
 CULVERT REPLACEMENT FOLLOWED BY PAVE PROJECT
 CULVERT SCHEDULED 4/17 THRU 4/19
 DAY CLOSURES 4/19 THRU 4/24

Project # AN-59



Road closure description
WCR 46.5 between WCR 19 and Milliken closed 4/17/2018 thru 4/19/2018 for emergency culvert replacement

Notice to Public
 Road signs and barricaded during closure
 Message boards to be used

Detour Route
 WCR 19 between WCR 46.5 and WCR 46 .5 mile paved
 WCR 46 between WCR 19 and WCR 25 3 mile gravel

Notes
 ADT of WCR 46.5 is; 1083/2016
 Culvert replaced is drainage
 Water to be used for dust control
 Emergency culvert replacement followed by pave project

Placement of signs not to scale Date
4/13/2018

Prepared by
 LEE STEPHEN

Approved by county engineer
 CAMERON PARROTT